

Ref. : VP 5445S-08

Rev. : Initial

Date: 18/10/2016

Page : 1/1

BUTTERFLY VALVE WITH GEAR BOX

VP 5445S-08



APPLICATION

General use: cold water, hot water, air.

GENERAL TECHNICAL CHARACTERISTICS

Fabrication according to BS5155.
Type with smooth ears for mounting between flanges.
Stem in two parts
100% tightness in both ways.
Mounting plate according to ISO 5211.
With gear box.

CONSTRUCTION

7	1	Gear box	
6	1	O ring	NBR
5	4	Bushing	PTFE
4	1	Stem	Stainless steel 410
3	1	Sleeve	Heat EPDM
2	1	Disc	Epoxy coated carbon steel A216 WCB
1	1	Body	Carbon steel A216 WCB
Pos.	Q-ty	Description	Material

DIMENSIONS

DN	A	B	L	C	D	d0	ISO	K	E	4-d	B1	L1	L2	L3	ØQ	Weight (kg)	
200	8"	235	175	38	60,6	202,5	22,1	F10	102	102	4-12	17	164	205	208	270	21
250	10"	275	203	38	65,6	250,5	28,45	F10	102	102	4-12	22	164	205	208	270	27
300	12"	305	242	40	76,9	301,5	31,6	F10	102	102	4-12	22	180	190	210	270	37

WORKING CONDITIONS

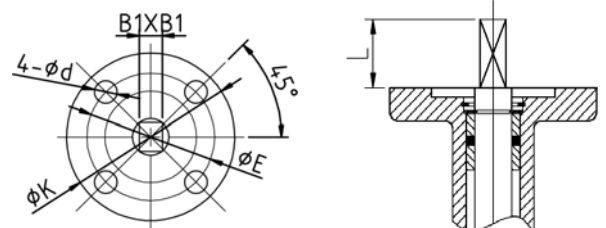
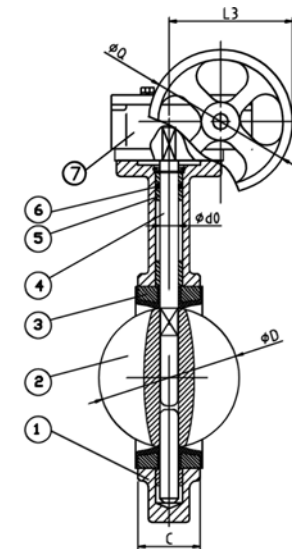
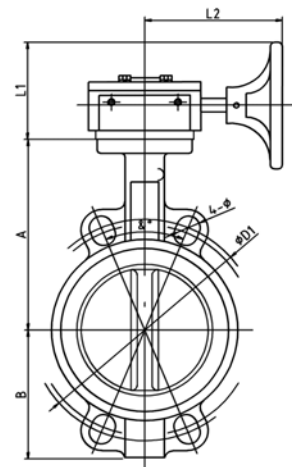
Maximum working pressure: 16 бар.
Maximum working temperature : -15°C / +130°C.
Peak temperature: -30°C / +150°C.

Test pressure according to EN 12266-1, DIN 3230, BS 6755 and ISO 5208 :

Body: 24 bar.
Seat: 17,6 bar.

STANDARDS

Blue epoxy coating RAL 5019.
Face to face dimensions according to NF EN 558-1 serie 20, ISO 5272 serie 20, DIN 3202.
Installation between flanges ISO PN10/16 following EN 1092-1, adjustable between flanges ASME B16.5 ASA150.



Mounting plate ISO 5211

The photographs and technical art works are not contractual. The specifications of the presented products are open to modifications without previous advice