

Ref. : VP4508-00.pas

Rev. : G

Date : 11/03/2015

Page : 1/1

FLANGED TYPE BUTTERFLY VALVE BARE SHAFT TECLARGE FL

VP 4508-00



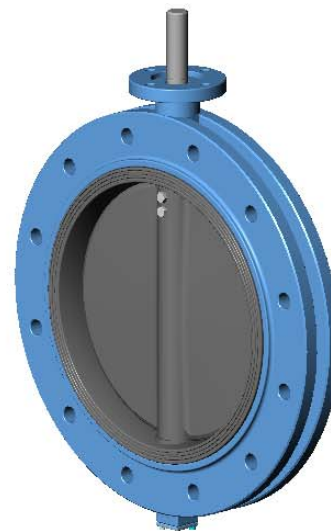
Tecofi
VALVE DESIGNER - FRANCE

APPLICATION

General use : water, sea water, sludge, etc.

GENERAL CHARACTERISTICS

Design in accordance with NF EN 593.
Tightness in both ways, NF EN 12266-1, ISO 5208, DIN 3230.
Two kinds of sleeve:
- body in dovetail shape ensures a perfect assembling (for high vacuum we can stick it),
- sleeve internally reinforced in aluminium giving a low torque.
Stem: half stem high and low or crossing stem depending on the diameter.
Coupling stem on butterfly assembled by blind screw.
Self lubricant bearing in copper alloy.
Supplementary tightness on stem by o'rings.
Dovetail type sleeve.

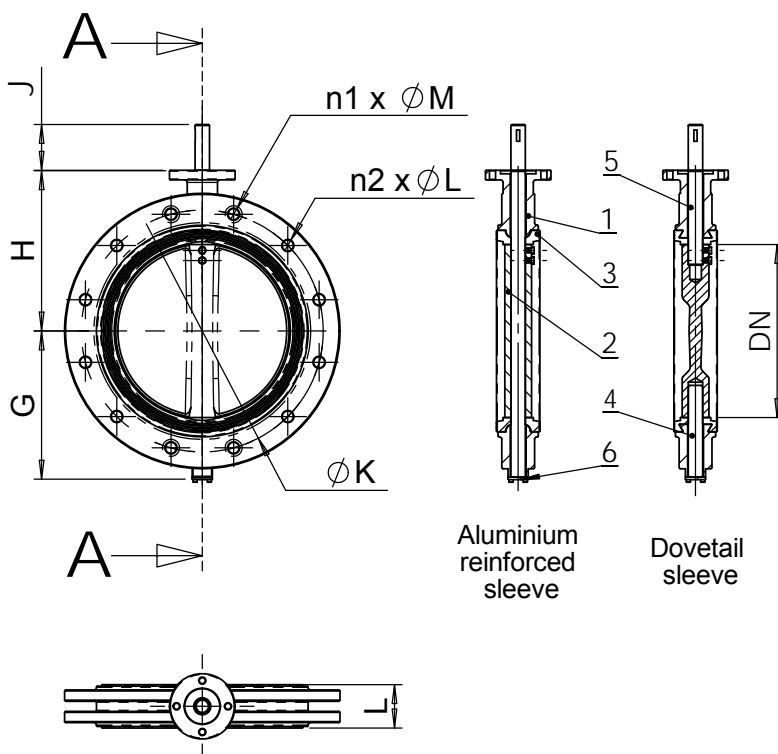


CONSTRUCTION

6	2	Bottom cover	Cast iron EN-GJL-250	DIN: GG25 ASTM: A48 class 40B BS: 1452 Grade 250
5	1	Upper stem	Stainless steel 410	DIN: 1.4006 ASTM: AISI 410 BS: 410 S 21
4	1	Lower stem	Stainless steel 410	DIN: 1.4006 ASTM: AISI 410 BS: 410 S 21
3	1	Sleeve	Heat EPDM	
2	1	Disc	Ductile iron EN-GJS-400-15	DIN: GGG40 ASTM: A536 65-45-12 BS: EN JS1030
1	1	Body	Ductile iron EN-GJS-400-15	DIN: GGG40 ASTM: A536 65-45-12 BS: EN JS1030
Pos.	Qty.	Description	Material	

DIMENSIONS

DN		Upper flange		Valve dimensions									
mm	inch	ISO	ØD	ØD1	n x ØN	G	H	L	PN10				Weight (kg)
									ØK	n1 x ØM	n2 x ØL		
350	14"	F10	125	102	4 x Ø12	267	368	78 (92*)	460	4 x M20	12 x Ø22	70	
400	16"	F14	175	140	4 x Ø18	309	400	102	515	4 x M24	12 x Ø26	88	
450	18"	F14	175	140	4 x Ø18	328	422	114	565	4 x M24	16 x Ø26	164	
500	20"	F14	175	140	4 x Ø18	361	480	127	620	4 x M24	16 x Ø26	179	
600	24"	F16	210	165	4 x Ø23	459	562	154	725	4 x M27	16 x Ø30	276	
700	28"	F25	300	254	8 x Ø18	520	624	165	840	4 x M27	20 x Ø30	414	
800	32"	F25	300	254	8 x Ø18	591	672	190	950	4 x M30	20 x Ø33	498	
900	36"	F25	300	254	8 x Ø18	656	720	203	1050	4 x M30	24 x Ø33	884	
1000	40"	F25	300	254	8 x Ø18	721	800	216	1160	4 x M33	24 x Ø36	1055	
1200	48"	F30	350	298	8 x Ø23	860	900	254	1380	4 x M36	24 x Ø39	1574	

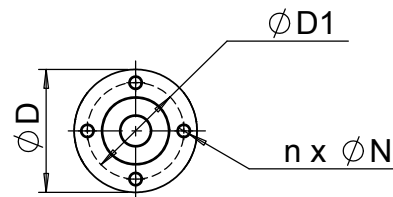


WORKING CONDITIONS

Maximum working pressure : 10 bar.
Maximum temperature : -15°C / +130 °C.
Peak temperature : -30°C / +150°C.

STANDARDS

Manufacture according to the requirements of the European directive 2014/68/UE «Equipments under pressure» : category III modulate H.
Pressure test according to standards EN 12266-1, DIN 3230, BS 5154 and ISO 5208 :
Body : 15.5 bar.
Seat : 11 bar.
Face to face according to standard EN 558-1 serie 20, ISO 5752 serie 20 and DIN 3202.
Flanged type ISO PN10 connections according to standard EN 1092-2.



Normalized base
ISO 5211.