

Ref. : VOC42411016-08.pas

Rev. : G

Date : 24/02/2015

Page : 1/1

# RESILIENT SEAT GATE VALVE PN16 WITH PLANETARY GEARBOX

VOC 42411016-08



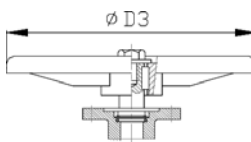
## APPLICATION

General use : Water supply, fire protection, irrigation, water treatment.

## GENERAL CHARACTERISTICS

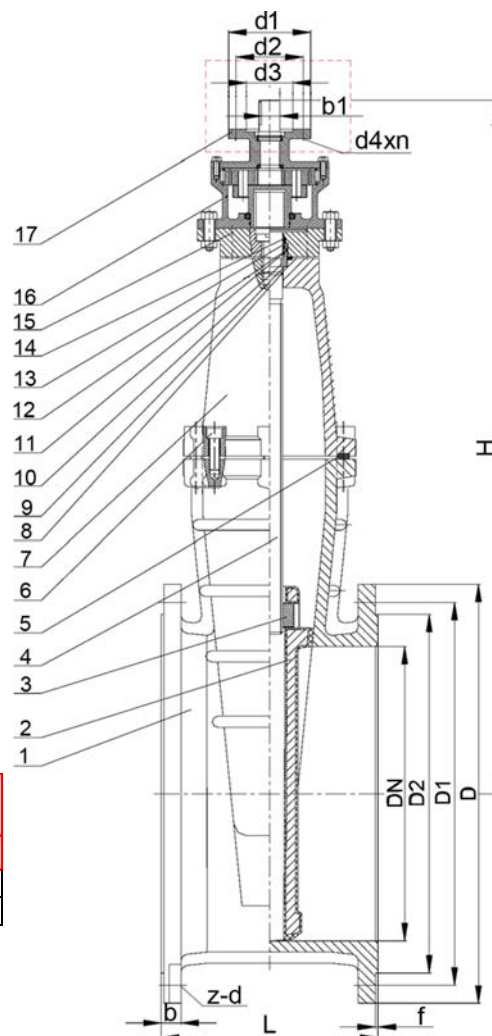
Design according to DIN3352.  
 Range : from DN450 to DN600.  
 Non rising stem.  
 Clockwise to close.  
 No zone of retention.  
 Low head losses.  
 ISO mounting plate for electric actuator adaptation.

## Operating handwheel



## CONSTRUCTION

|             |                    |                         |
|-------------|--------------------|-------------------------|
| 17          | Mounting plate ISO |                         |
| 16          | Gear box           |                         |
| 15          | Gland packing      | Ductile iron GGG50      |
| 14          | Dust ring          | EPDM                    |
| 13          | Sealing ring       | Brass                   |
| 12          | O ring             | EPDM                    |
| 11          | O ring             | EPDM                    |
| 10          | Minipad            | TFL                     |
| 9           | Locating ring      | Brass                   |
| 8           | O ring             | EPDM                    |
| 7           | Bonnet             | Ductile iron GGG50      |
| 6           | Nut                | Steel A3                |
| 5           | gasket             | EPDM                    |
| 4           | Stem               | Stainless steel 2Cr13   |
| 3           | Nut                | Brass                   |
| 2           | Wedge              | Ductile iron GGG50+EPDM |
| 1           | Body               | Ductile iron GGG50      |
| <b>Pos.</b> | <b>Description</b> | <b>Material</b>         |



## DIMENSIONS

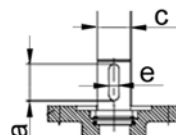
| DN  |      | D    | D1   |      | D2  | H    | L   | b    | f | Z - d    |          | Weight (kg) |
|-----|------|------|------|------|-----|------|-----|------|---|----------|----------|-------------|
| mm  | inch |      | PN10 | PN16 |     |      |     |      |   | PN10     | PN16     |             |
| 450 | 18"  | 640  | 565  | 585  | 530 | 1070 | 330 | 30   | 4 | 20 x Ø28 | 20 x Ø31 | 320         |
| 500 | 20"  | 715  | 620  | 650  | 582 | 1150 | 350 | 31,5 | 4 | 20 x Ø28 | 20 x Ø34 | 430         |
| 600 | 24"  | 1034 | 725  | 770  | 682 | 1310 | 390 | 36   | 5 | 20 x Ø31 | 20 x Ø37 | 630         |

## WORKING CONDITIONS

Maximum working pressure : 16 bar.  
 Maximum temperature : 0°C / +80°C.

## STANDARDS

Face to face according to EN558-1 serie 14 and DIN 3202 / F4.  
 Connection according to standard EN 1092-2 ISO PN10 and PN16.



## Mounting flange

| DN  |      | ISO | d1  | d2  | d3  | b1   | d4xn  | a  | e  | c  | Nb of turns | Torque (Nm) |      |
|-----|------|-----|-----|-----|-----|------|-------|----|----|----|-------------|-------------|------|
| mm  | inch |     |     |     |     |      |       |    |    |    |             | PN10        | PN16 |
| 450 | 18"  | F14 | 175 | 140 | 100 | 27,5 | 4-Ø18 | 35 | 10 | 32 | -           | -           | -    |
| 500 | 20"  | F14 | 175 | 140 | 100 | 27,5 | 4-Ø18 | 35 | 10 | 32 | 172         | 135         | 150  |
| 600 | 24"  | F14 | 175 | 140 | 100 | 27,5 | 4-Ø18 | 35 | 10 | 32 | 204         | 144         | 160  |

TECOFI France - 83, Rue Marcel Mérieux 69960 Corbas - FRANCE  
 Tél. +33 (0) 4 72 79 05 79 - Fax +33 (0) 4 78 90 19 19 / +33 (0) 4 72 79 05 70  
 Adresses e-mail : sales@tecofi.fr ; tecofi@tecofi.fr / Site web : www.tecofi.fr