

Ref. : VM9101 FR.pas

Rev. : Initial

Date : 27/02/2018

Page : 1/1

PNEUMATIC PINCH VALVE

VM9101



APPLICATION

General use :Pneumatic conveying systems, pigments, and granules, ceramics, glass, plastic industry, extraction systems, dosing systems, filling and weighing systems air venting systems.

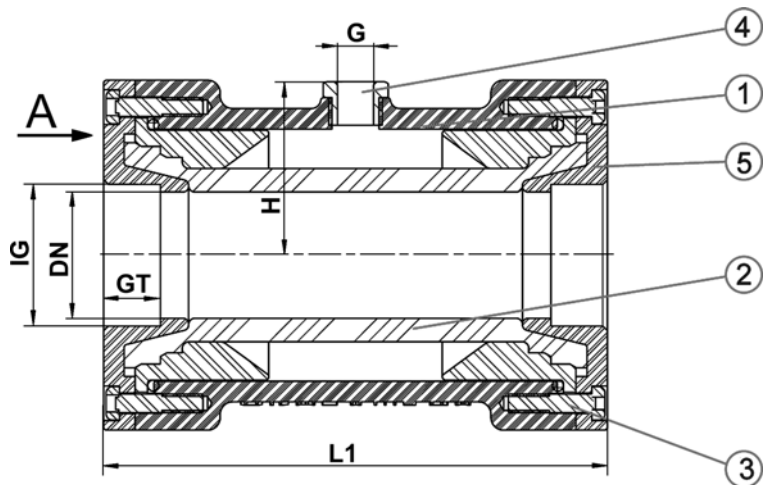
GENERAL CHARACTERISTICS

Range : from DN 10 to DN 50
 Body extremely light and compact.
 Food compliance.
 Full bore.
 Optimal sealing, without retention.
 Easy change of the sleeve.



CONSTRUCTION

5	2	End	POM black (Polyoxymethylene)
4	1	Pneumatic connection	Nickel plated brass
3	4- (DN10-15) 8- (DN20-40) 12- (DN50)	Bolt	Stainless steel A4
2	1	Sleeve	natural anti abrasive rubber
1	1	Body	POM black (Polyoxymethylene)
Pos.	Q-ty	Description	Materail



DIMENSIONS

DN (mm)	IG (inch)	GT (mm)	L1 'mm)	D1 (mm)	D2 (mm)	G (inch)	H (mm)	Capacity (ml)	Weight (kg)
10	3/8"	12	80	45	34	1/8"	27,5	15	0,12
15	1/2"	14	95	55	46	1/8"	32,5	25	0,31
20	3/4"	17	103	63	56	1/8"	34,5	40	0,31
25	1"	17	120	75	70	1/8"	40,0	80	0,50
32	1"1/4	18	135	98	90	1/4"	48,0	150	0,66
40	1"1/2	18	160	111	103	1/4"	55,0	300	0,97
50	2"	24	170	130	120	1/4"	64,0	450	1,50

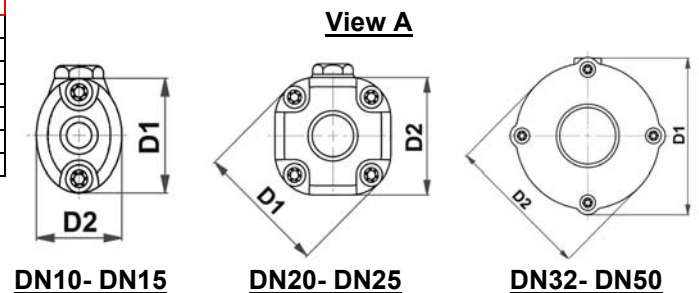
WORKING CONDITIONS:

Temperature : -40°C / +80°C

Maximum pressure :
 DN 10-25 : 6 bar
 DN 32-50 : 4.5 bar

STANDARDS

Internal threaded connection according to DIN EN ISO 228 (G).



The photographs and technical art works are not contractual. The specifications of the presented products are open to modifications without previous advice