

# KNIFE GATE VALVE CAST IRON BODY

TECHNICAL PASSPORT

## THROUGH CONDUIT KNIFE GATE VALVE WITH DOUBLE ACTING PNEUMATIC ACTUATOR CAST IRON BODY - BETWEEN FLANGES PN10

VGT 3400-03

### APPLICATION

The TECOFI through conduit knife gate valve is particularly suitable for stationary applications: pulp outlet after pulping and defiberizing, purification consisting in isolating impurities such as varnish, paint, glue, staples or others..

**Areas of application:** paper-cardboard recycling units, paper factory, chemical plant.



**Fluids:** water, paper pulp, fibrous products.

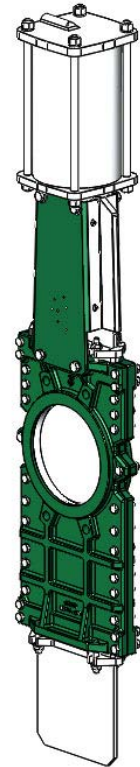
### GENERAL CHARACTERISTICS

**Range:** from DN50 to DN400.

Rising stem knife gate valve with longer body than a conventional valve, consisting of two parts (half-body) assembled by bolting. Bi-directional sealing ensured by the use of two seat seals. Installation between ISO PN10 flanges.

Internal parts designed to avoid the deposit of product: small retention area.

The gate is long and comes out on the outside of the body in the lower part, which explains the presence of a second gland packing system. In its central zone the gate has an orifice ensuring in the valve open position the full bore for the fluid without any retention zone and a complete seal in the closed position. The polishing of the gate faces as standard ensures gentle contact with all seals. The two gland systems are made of ductile iron with good mechanical strength to avoid any risk of breakage. The gland packing gaskets are made of the same material as that of the seat, which gives more elasticity to the assembly and contributes to the reduction of the operating forces. The support plates are made of profiled and preformed sheet from DN50 to DN300 for mounting accessories and kits. The valve remains operable under difficult conditions and ensures operation without accumulation of product.



### STANDARDS

<b>Design</b>	Manufacture according to the requirements of the European directive n° 2014/68/UE «Equipment under pressure» : modulate H.
<b>Face to face</b>	Face to face dimension according to TECOFI standard
<b>Connection</b>	Mounting between flanges in accordance with EN1092-2 and ISO 7005-1 : ISO PN10
<b>Tests</b>	Pressure test according to standards EN12266-1, DIN 3230, BS 5154 and ISO 5208.. - Body : WP x 1.5 bar - Seat : WP x 1.1 bar

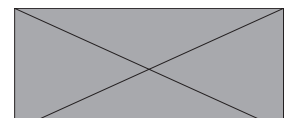
### PRODUCT APPROVALS



On request

**Tecofi France**

83 rue Marcel Mérieux - 69960 Corbas  
Tél. +33 (0)4 72 79 05 79 - Fax. +33 (0)4 78 90 19 19  
E-mail : sales@tecofi.fr - [www.tecofi.fr](http://www.tecofi.fr)



## KNIFE GATE VALVE CAST IRON BODY

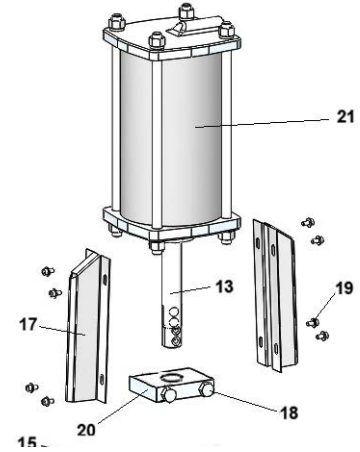
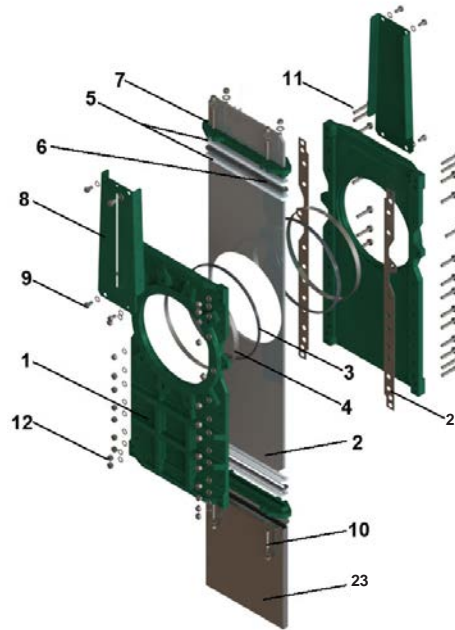
### TECHNICAL PASSPORT

VGT 3400-03

### CONSTRUCTION

The valves are coated with epoxy paint to protect them against corrosion

Component	Coating
Body (1)	Epoxy powder RAL 6005 150 microns
Support plate (8)	Epoxy liquid RAL 6005 70 microns
Packing gland (7)	



Pos..	Q-ty	Description	Material	Equivalences		
				DIN	ASTM	BS
1	2	Half body	Cast iron EN-GJL-250	GG25	A48 class 40B	1452 Grade 250
2	1	Gate	Stainless steel X5CrNi 18-10	X5CrNi 18 10	A 182 AISI 304	1449-2 304 S15
3	2	Seat gasket (1)	NBR			NBR
4	2	Support ring (1)	Stainless steel X5CrNi 18-10	X5CrNi 18 10	A 182 AISI 304	1449-2 304 S15
5	4	Packing	PTFE			
6	2	O ring	NBR			NBR
7	2	Packing gland	Ductile iron EN-GJS-400-15	GGG40	A536 65-45-12	1563 EN-JS1030
8	2	Support plate	Steel			
9	4	Screw	Stainless steel A2-70			
10	8*	Tie rod, washer, nut	Stainless steel A2-70			
11	n	Screw	Zinc plated steel 8.8			
12	n	Nut + washer	Zinc plated steel 8.8			
13	1	Stem	Stainless steel 13% Cr	X12CR13	AISI 410	
14	1	Detection screw	Stainless steel X5CrNi 18-10	X5CrNi 18 10	A 182 AISI 304	1449-2 304 S15
15	1	Screw	Stainless steel A2-70			
16	2	Nut	Stainless steel X5CrNi 18-10	X5CrNi 18 10	A 182 AISI 304	1449-2 304 S15
17	1	Protection plate	Stainless steel X5CrNi 18-10	X5CrNi 18 10	A 182 AISI 304	1449-2 304 S15
18	4	Screw	Stainless steel A2-70			
19	1	Screw	Stainless steel A2-70			
20	1	Top flange	Zinc plated steel			
21	1	Pneumatic actuator	Aluminium			
22	2	Body gasket	PTFE			
23	1	Bottom cover (1)	Stainless steel X5CrNi 18-10	X5CrNi 18 10	A 182 AISI 304	1449-2 304 S15

n - 10 (DN50); 12 (DN65); 16 (DN80-DN100) - 18 (DN125); 22 (DN150); 28 (DN300 -DN300); 32 (DN350); 34 (DN400)

\* 16 (DN350-DN400)

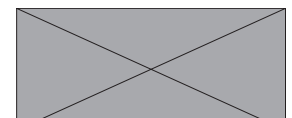
(1) - in option

**Tecofi France**

83 rue Marcel Mérieux - 69960 Corbas

Tél. +33 (0)4 72 79 05 79 - Fax. +33 (0)4 78 90 19 19

E-mail : sales@tecofi.fr - [www.tecofi.fr](http://www.tecofi.fr)

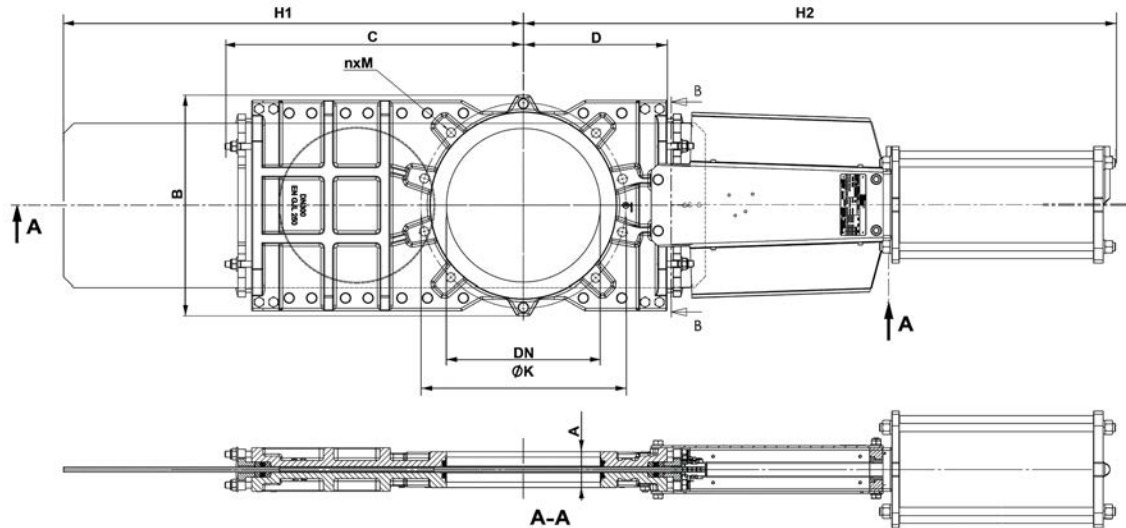


## KNIFE GATE VALVE CAST IRON BODY

TECHNICAL PASSPORT

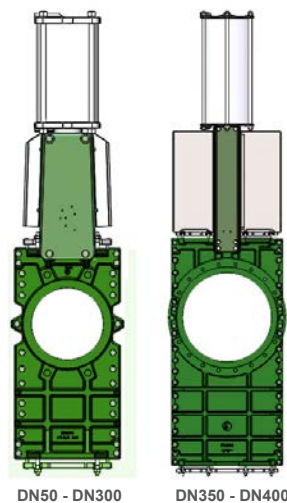
VGT 3400-03

### DIMENSIONS



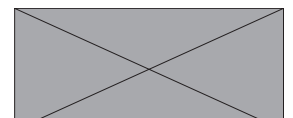
Dimension A - face à face suivant standard TECOFI

DN		A	B	H1		H2	D	Pression maxi (bar)	n-ØM	ØK	Poids (kg)
mm	inch			mini	maxi						
50	2"	40	150	162	221	412	118	10	4xM16	125	10
65	2 1/2"	40	168	190	264	458	124	10	4xM16	145	12
80	3"	50	184	216	297	502	135	10	4xM16	160	18
100	4"	50	205	247	354	562	150	10	4xM16	180	24
125	5"	50	220	304	430	635	162	10	4xM16	210	31
150	6"	60	240	228	530	718	178	10	4XM20	240	39
200	8"	60	313	413	641	885	210	10	4XM20	295	67
250	10"	70	373	487	772	1042	250	10	8XM20	350	126
300	12"	70	430	579	882	1164	280	6	8XM20	400	138
350	14"	96	528	654	1043	1362	358	6	10XM20	460	200
400	16"	100	586	731	1168	1542	415	6	10XM24	515	281



**Tecofi France**

83 rue Marcel Mérieux - 69960 Corbas  
Tél. +33 (0)4 72 79 05 79 - Fax. +33 (0)4 78 90 19 19  
E-mail : sales@tecofi.fr - [www.tecofi.fr](http://www.tecofi.fr)



# KNIFE GATE VALVE CAST IRON BODY

TECHNICAL PASSPORT

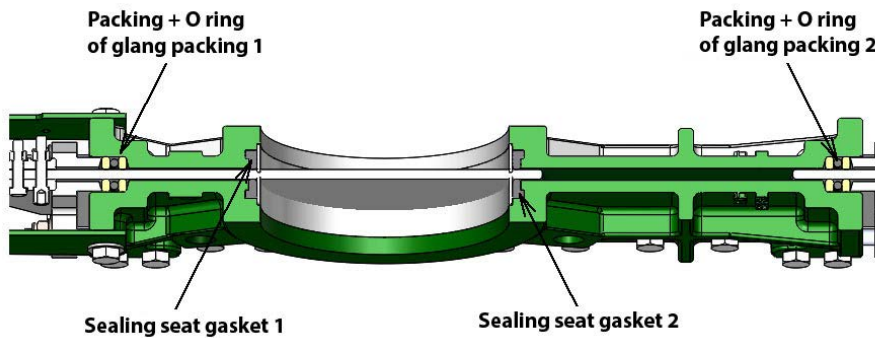
VGT 3400-03

## WORKING CONDITIONS

Maximum working pressure : DN50-250 : 10 bar  
DN300-400 : 6 bar

Maximum working temperature : -10°C / +80°C (NBR joint in standard)

### Sealing system



The photographs and technical art works are not contractual. The specifications of the presented products are open to modifications without previous advice.

**Tecofi France**

83 rue Marcel Mérieux - 69960 Corbas  
Tél. +33 (0)4 72 79 05 79 - Fax. +33 (0)4 78 90 19 19  
E-mail : sales@tecofi.fr - [www.tecofi.fr](http://www.tecofi.fr)

