

Ref. : JT4252 .pas

Rev. : A

Date : 27/01/2015

Page : 1/1

DISMANTLING JOINTS PN25

JT4252



Tecofi
VALVE DESIGNER - FRANCE

APPLICATION

General use : for easy installation and dismantling of valves.

GENERAL CHARACTERISTICS

Range : from DN 80 up to DN 2000.
Rigid connection between the connecting pipes.
Long course.
PN25.

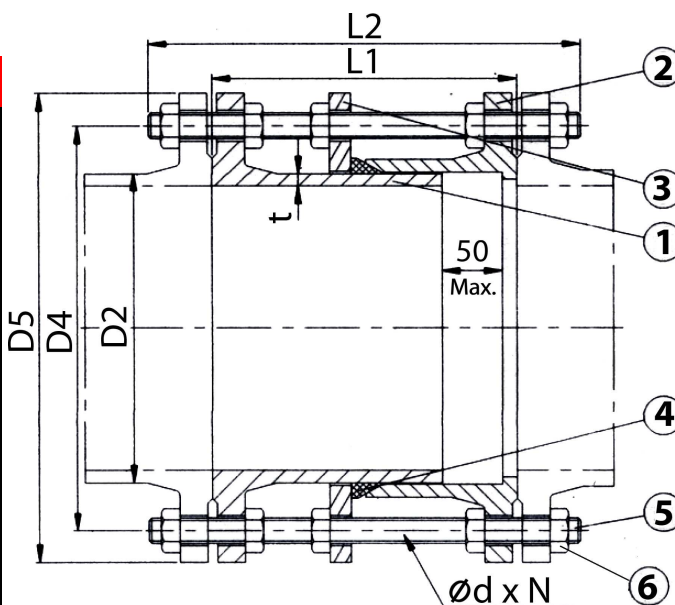


CONSTRUCTION

| 6 | - | Nut | Zinc plated steel | |
|------|------|----------------------|------------------------------|--|
| 5 | - | Stud bolt | Zinc plated steel | |
| 4 | 1 | Sealing ring | EPDM | |
| 3 | 1 | Retaining flange | Ductile iron EN-GJS-500-7 | DIN: GGG50 ASTM: A536 70-50-05 BS: 500/7 |
| 2 | 1 | Flanged pipe - long | Ductile iron EN-GJS-500-7 | DIN: GGG50 ASTM: A536 70-50-05 BS: 500/7 |
| 1 | 1 | Flanged pipe - short | Ductile iron EN-GJS-500-7 | DIN: GGG50 ASTM: A536 70-50-05 BS: 500/7 |
| Pos. | Qty. | Description | Material | |

DIMENSIONS

| DN | | D2 | D4 | D5 | L1 | L2 | d | N | t |
|------|------|------|------|------|-----|-----|----|----|------|
| mm | inch | | | | | | | | |
| 80 | 3" | 98 | 160 | 200 | 210 | 330 | 19 | 8 | 7,0 |
| 100 | 4" | 118 | 190 | 235 | 220 | 340 | 23 | 8 | 7,2 |
| 125 | 5" | 144 | 220 | 270 | 220 | 370 | 28 | 8 | 7,5 |
| 150 | 6" | 170 | 250 | 300 | 230 | 370 | 28 | 8 | 7,8 |
| 200 | 8" | 222 | 310 | 360 | 230 | 370 | 28 | 12 | 8,4 |
| 250 | 10" | 274 | 370 | 425 | 250 | 410 | 31 | 12 | 9,0 |
| 300 | 12" | 326 | 430 | 485 | 250 | 410 | 31 | 16 | 9,6 |
| 350 | 14" | 378 | 490 | 555 | 270 | 440 | 34 | 16 | 10,2 |
| 400 | 16" | 429 | 550 | 620 | 280 | 480 | 37 | 16 | 10,8 |
| 450 | 18" | 480 | 600 | 670 | 280 | 480 | 37 | 20 | 11,4 |
| 500 | 20" | 532 | 660 | 730 | 300 | 480 | 37 | 20 | 12,0 |
| 600 | 24" | 635 | 770 | 845 | 320 | 520 | 40 | 20 | 13,2 |
| 700 | 28" | 738 | 875 | 960 | 340 | 530 | 43 | 24 | 14,4 |
| 800 | 32" | 842 | 990 | 1085 | 360 | 600 | 49 | 24 | 15,6 |
| 900 | 36" | 945 | 1090 | 1185 | 380 | 600 | 49 | 28 | 16,8 |
| 1000 | 40" | 1048 | 1210 | 1320 | 400 | 650 | 56 | 28 | 18,0 |
| 1100 | 44" | 1152 | 1310 | 1420 | 420 | 672 | 56 | 32 | 19,2 |
| 1200 | 48" | 1255 | 1420 | 1530 | 450 | 720 | 56 | 32 | 20,4 |
| 1400 | 56" | 1462 | 1640 | 1755 | 480 | 770 | 62 | 36 | 22,8 |
| 1600 | 64" | 1668 | 1860 | 1975 | 510 | 815 | 62 | 40 | 25,2 |
| 1800 | 72" | 1875 | 2070 | 2195 | 540 | 865 | 70 | 44 | 27,6 |
| 2000 | 80" | 2082 | 2300 | 2425 | 580 | 930 | 70 | 48 | 30,0 |



STANDARDS

Flanges in accordance with ISO 2531 PN25