

Ref. : DI 7240.pas

Rev. : D

Date : 23/05/2014

Page : 1/1

# RUBBER EXPANSION JOINT WITH SWIVEL FLANGES PN16

## DI 724016



### APPLICATION

Expansion joint.

### GENERAL CHARACTERISTICS

EPDM rubber bellow.  
Zinc-plated steel flanges drilled ends - PN 16.

Movement :

- Axial compression,
- Axial extension,
- Lateral movement.

### CONSTRUCTION

4	2	Flange	Zinc plated steel
3	2	Reinforced wire	Steel
2	1	Reinforcement	Nylon tyre cord
1	1	Bellow	EPDM
Pos.	Qty.	Description	Material

### DIMENSIONS

DN		L	ØK	n x Ød	ØD	T	Lc	Le	Li	A°	Weight (kg)
mm	inch										
200	8"	205	295	12 x Ø23	340	21	25	14	22	15	17,7
250	10"	240	355	12 x Ø28	405	23	25	14	22	15	26,6
300	12"	260	410	12 x Ø28	460	25	25	16	22	15	32,6

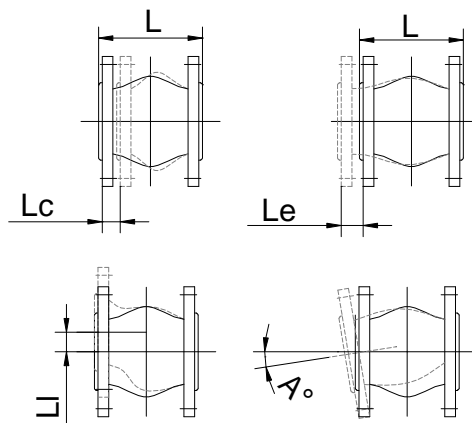
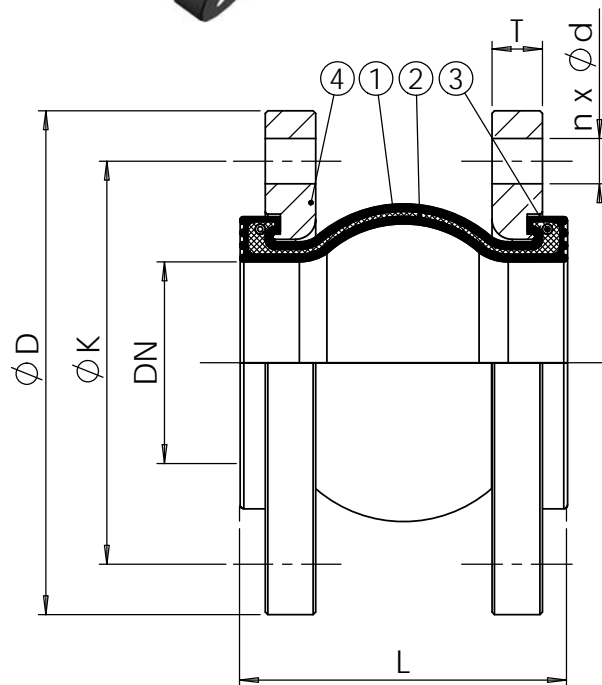
### WORKING CONDITIONS

PS max : 16 bar  
TS max : -10°C / +115°C

Pressure test according to standards  
EN 12266-1, DIN 3230, BS 6755 and ISO 5208.

### STANDARDS

Flanges drilled according to standard  
EN 1092-1 ISO PN 16.



Lc : Axial compression.  
Le : Axial extension.  
Li : Lateral movement.

TECOFI France - 83, Rue Marcel Mérieux 69960 Corbas - FRANCE  
Tél. +33 (0) 4 72 79 05 79 - Fax +33 (0) 4 78 90 19 19 / +33 (0) 4 72 79 05 70  
Adresses e-mail : sales@tecofi.fr ; tecofi@tecofi.fr / Site web : www.tecofi.fr