

Ref. : DI7140S.pas

Rev. : D.

Date : 23/05/2014

Page : 1/1

RUBBER EXPANSION JOINT BSP FEMALE THREADED DI 7140S



APPLICATION

Expansion joint.

GENERAL CHARACTERISTICS

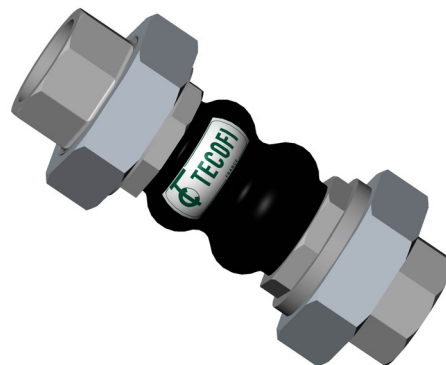
EPDM rubber bellow
Female cast iron 3 pieces BSP threaded union ends galvanized cast iron.

Movement:

- Axial compression,
- Axial elongation,
- Lateral movement.

CONSTRUCTION

3	2	Union	Galvanized cast iron
2	1	Reinforcement	Nylon tyre cord
1	1	Bellow	EPDM rubber
Pos.	Qty.	Description	Material



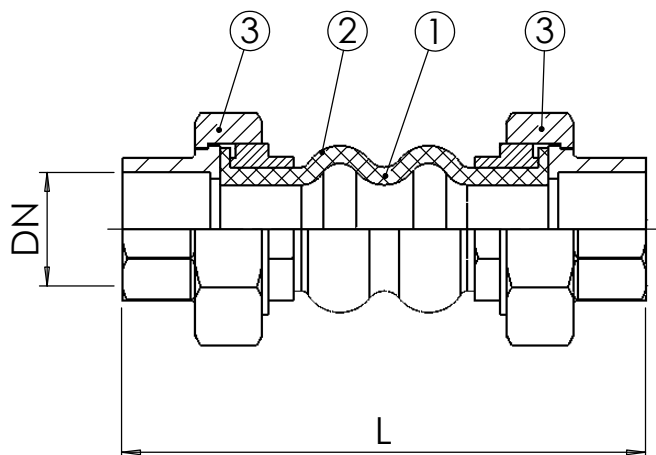
DIMENSIONS

DN		L	Lc	Le	LI	A°	Weights (kg)
mm	inch						
15	1/2"	200	22	6	22	45°	0,44
20	3/4"	200	22	6	22	45°	0,66
25	1"	200	22	6	22	45°	1,07
32	1 1/4"	200	22	6	22	45°	1,44
40	1 1/2"	200	22	6	22	45°	1,69
50	2"	200	22	6	22	45°	2,50
65	2 1/2"	240	22	6	22	45°	4,1
80	3"	240	22	6	22	45°	5,3

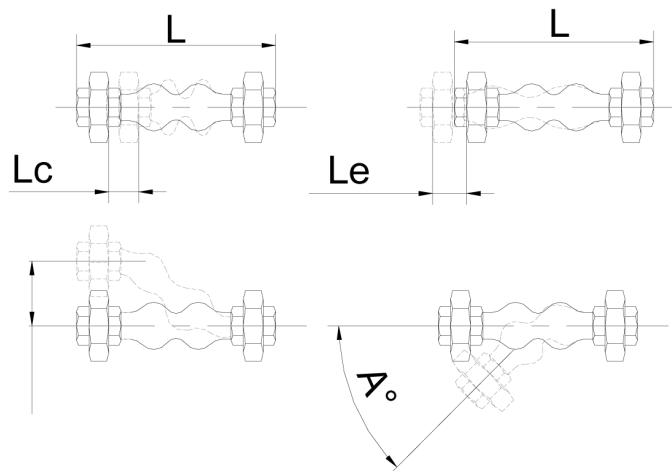
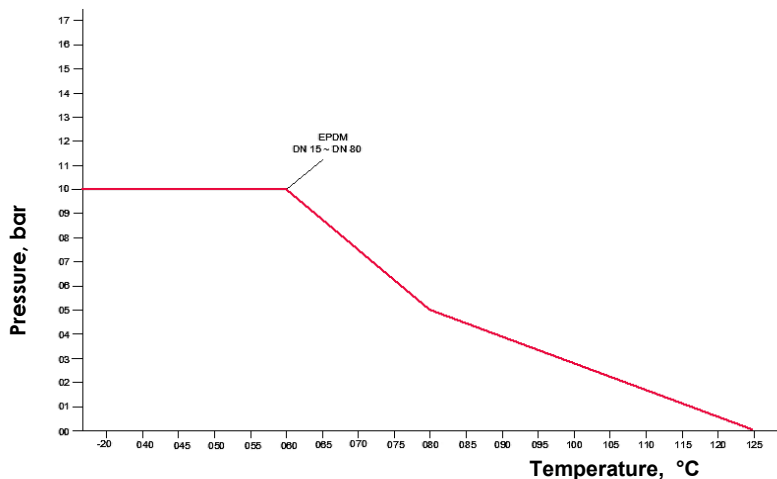
Lc : Axial compression.

Le : Axial extension.

LI : Lateral movement.



WORKING CONDITIONS



STANDARDS

BSP female threaded according to standard ISO 228-1.

TECOFI France - 83, Rue Marcel Mérieux 69960 Corbas - FRANCE
Tél. +33 (0) 4 72 79 05 79 - Fax +33 (0) 4 78 90 19 19 / +33 (0) 4 72 79 05 70
Adresses e-mail : sales@tecofi.fr ; tecofi@tecofi.fr / Site web : www.tecofi.fr