

Ref. : CE 1150.pas

Rev. : Initial

Date : 25/10/06

Page : 1/1

# MULTIJET METER DROWNED DIAL TYPE

## CE 1150



**Tecofi**   
FAREX FLUID SOLUTION DESIGNER

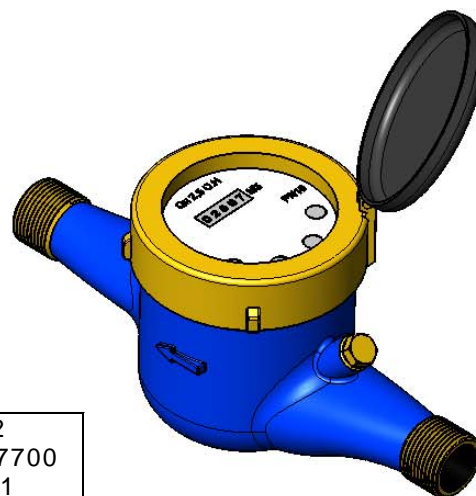
### APPLICATION

Multi jet meter drowned dial type.

### GENERAL CHARACTERISTICS

Brass body and cover, multi jet meter, drowned dial type.  
BSP male threaded ends - PN 16.

### CONSTRUCTION



2	1	Bonnet	Brass CuZn39Pb2	DIN: CuZn39Pb2 ASTM: B124 C37700 BS: 12164 CZ121
1	1	Body	Brass CuZn39Pb2	DIN: CuZn39Pb2 ASTM: B124 C37700 BS: 12164 CZ121
<b>Pos.</b>	<b>Qty.</b>	<b>Description</b>	<b>Material</b>	

### DIMENSIONS

DN		A	B	Weight (kg)
mm	inch			
15	1/2"	170	120	1,4
20	3/4"	190	130	1,6
25	1"	260	140	2,2
32	1" 1/4	260	140	2,3
40	1" 1/2	300	160	4,2
50	2"	300	160	4,4

### WORKING CONDITIONS

Maximum working pressure : 16 bar.  
Maximum temperature : + 30°C.

Pressure test according to standards  
EN 12266-1, DIN 3230, BS 5154 and ISO 5208 :  
Body : 24 bar.  
Seat : 17,6 bar.

### STANDARDS

BSP male threaded according to standard ISO 228-1.

