

NON RETURN AXIAL CHECK VALVE

TECHNICAL PASSPORT

CA 6469

NON RETURN CHECK VALVE BETWEEN FLANGES STAINLESS STEEL BODY

APPLICATION

Protection of installations against reverse flow.

-Area of use : Chemical industry, pharmaceutical industry or petro-chemicals, corrosives, high pressure, high temperature, thermal fluid, hydraulic networks, etc.



-Fluids: water, glycol, compressed air, steam, diathermic oil, chemical products, neutral fluids.



GENERAL CHARACTERISTICS

- Range : from DN15 to DN300.
- Non-return valve entirely in stainless steel with multi-position disc.
- Métal/metal sealing, reduced face to face.
- Excellent hydraulic results.
- High performance in pressure and temperature.
- Mounting between flanges PN10/16/25/40 and ASA150 (PN20).
- Installation possible on horizontal or vertical piping.
- Low pressure losses. Without risk of water hammer.

STANDARDS

Face to face	According to EN 558 serie 49 from DN15 to DN200, for larger diameters according to our standards
Connection	Mounting between flanges EN 1092-2 and DIN 2501/1 : ISO PN10/16/25/40 and ASA150.
Tests	Hydraulic tests carried out according to API598 standard.
Leak rate	Leak rate E (DN15-32) and D (DN40-200) according to standard EN12266-1.

PRODUCT APPROVALS



Tecofi France

83 rue Marcel Mérieux - 69960 Corbas
Tél. +33 (0)4 72 79 05 79 - Fax. +33 (0)4 78 90 19 19
E-mail : sales@tecofi.fr - www.tecofi.fr

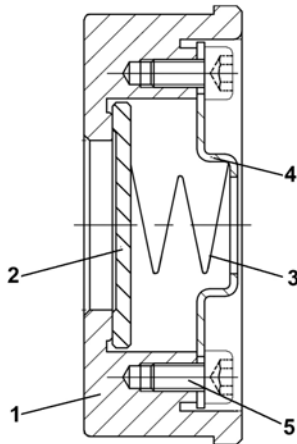


NON RETURN AXIAL CHECK VALVE

TECHNICAL PASSPORT

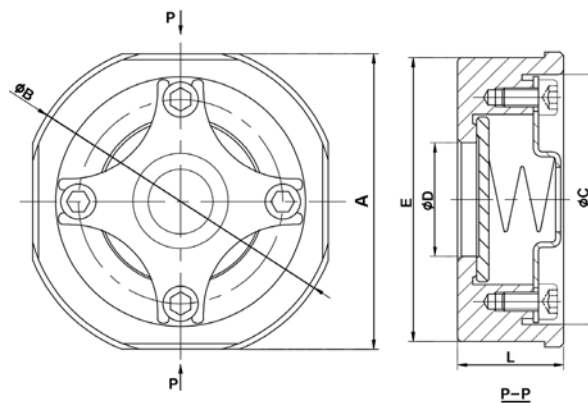
CA 6469

CONSTRUCTION DN15-100



Rep.	Description	Material
1	Body	Stainless steel ASTM A351 CF8M
2	Disc	Stainless steel ASTM A351 CF8M
3	Spring	Stainless steel AISI 316
4	Cover	Stainless steel AISI 316
5	Bolt	Stainless steel AISI 316

DIMENSIONS DN15-100



DN		Ø A	Ø B	Ø D	Ø C	Ø E	L	Kvs	Weight (kg)
mm	inch								
15	1/2"	45	53	15	38.5	43.5	16	4.4	0.10
20	3/4"	55.5	63	19	44	53.5	19	6.8	0.16
25	1"	65	73	25	54	63.5	22	10.8	0.28
32*	1"1/4	78.5	84	30	66	76	28	17	0.52
40*	1"1/2	88.5	94	38	76	86	31.5	26	0.70
50	2"	98.5	107	47	85	96	40	43	1.10
65	2"1/2	119	126	62	106	116.5	46	60	1.58
80	3"	134.5	144.5	77	118	123	50	80	1.78
100	4"	154.5	164	95	136	152.5	60	113	3.30

Tecofi France

83 rue Marcel Mérieux - 69960 Corbas
 Tél. +33 (0)4 72 79 05 79 - Fax. +33 (0)4 78 90 19 19
 E-mail : sales@tecofi.fr - www.tecofi.fr

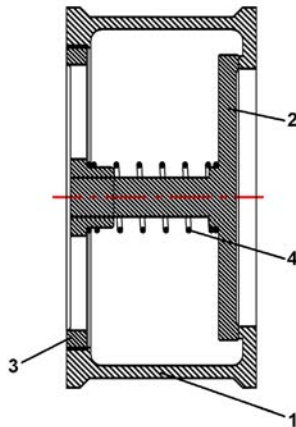


NON RETURN AXIAL CHECK VALVE

TECHNICAL PASSPORT

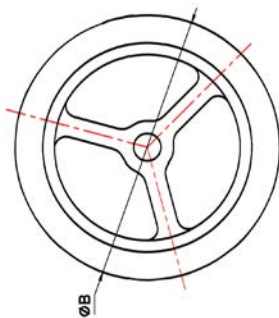
CA 6469

CONSTRUCTION DN125-300

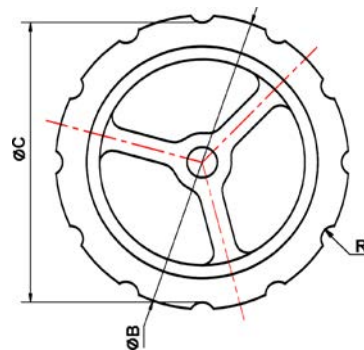
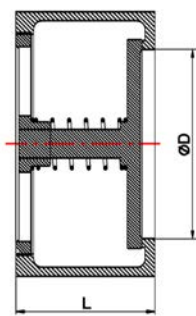


Rep.	Description	Material
1	Body	Stainless steel ASTM A351 CF8M
2	Disc	Stainless steel ASTM A351 CF8M
3	Guide	Stainless steel ASTM A351 CF8M
4	Spring	Stainless steel

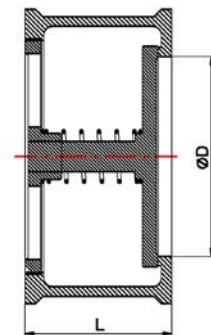
DIMENSIONS



(DN125-150)



(DN200-300)



DN		Ø B	Ø C	Ø D	n-R	L	Kvs	Weight (kg)
mm	inch							
125	5"	190.5	-	122	-	90	183	8
150	6"	219	-	148	-	106	258	12
200	8"	282	272	200	12-R20	140	410	22
250	10"	340	326	250	12-R20	145	698	35
300	12"	400	376	300	12-R25	160	732	45

Tecofi France

83 rue Marcel Mérieux - 69960 Corbas
 Tél. +33 (0)4 72 79 05 79 - Fax. +33 (0)4 78 90 19 19
 E-mail : sales@tecofi.fr - www.tecofi.fr



NON RETURN AXIAL CHECK VALVE

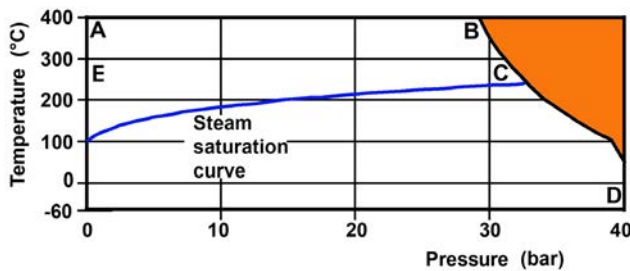
TECHNICAL PASSPORT

CA 6469

WORKING CONDITIONS

Maximum working pressure : 40 bar
 Maximum working temperature : -20°C / +300°C

When using steam:

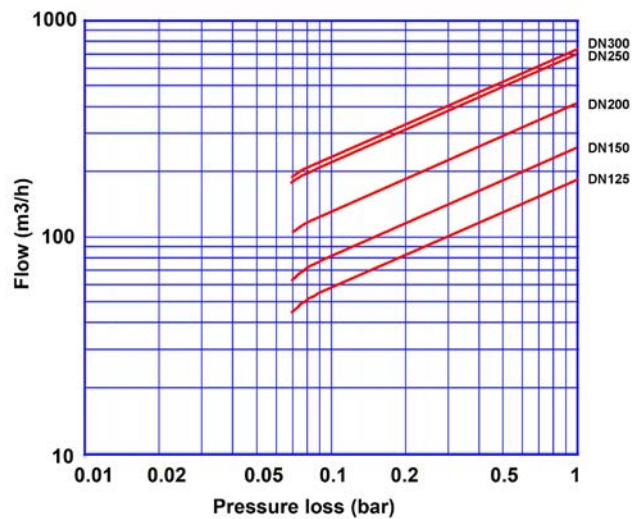
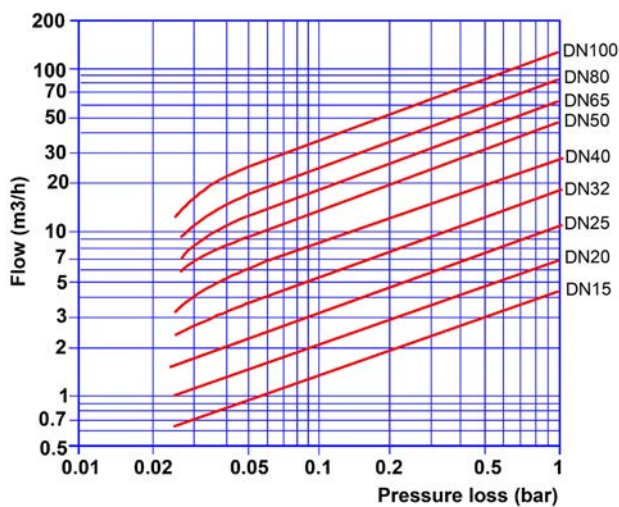


Strongly discouraged area

CRACKING PRESSURE (mbar)

Mounting direction	DN														
	mm	15	20	25	32	40	50	65	80	100	125	150	200	250	300
	inch	1.2"	3.4"	1"	1"1/4	1"1/2	2"	2"1/2	3"	4"	5"	6"	8"	10"	12"
Horizontal		22.5	22.5	22.5	23.5	24.5	24.5	25	25.5	26.5	22.0	22.0	22.0	22.0	22.0
Vertical ascending		25	25	25	27	28	29	30	31	33	30.0	30.0	30.0	30.0	30.0
Vertical descending		20	20	20	20	20	20	20	20	20	10.0	10.0	10.0	10.0	10.0

HEAD LOSS DIAGRAM



The photographs and technical art works are not contractual. The specifications of the presented products are open to modifications without previous advice

Tecofi France

83 rue Marcel Mérieux - 69960 Corbas
 Tél. +33 (0)4 72 79 05 79 - Fax. +33 (0)4 78 90 19 19
 E-mail : sales@tecofi.fr - www.tecofi.fr

