

Ref. : BS 5378SW pas

Rev. : Initial

Date : 18/09/2013

Page : 1/1

3PIECES FULL BORE BALL VALVE PN100

BS 5378SW



Tecofi
VALVE DESIGNER - FRANCE

APPLICATION

General use : Chemical and pharmaceutical industries, petrochemical industries, hydraulic installation, compressed air

GENERAL CHARACTERISTICS

- From DN1/4" to DN 2".
- Full bore
- Anti blow-out stem
- Special gland pack with elastic washer
- Antistatic device
- Fire safe according to API 607
- Locking device
- Handwheel and stem extension (optional)
- ISO 5211 mounting pad
- Fully encapsulated bolts
- Pressure class 600 lbs



CONSTRUCTION

9	Handle	Stainless steel 304
8	Tie rod packing	Stainless steel 304
7	Packing nut	Stainless steel 304
6	Packing	Graphit
5	Seat	PTFE with 15% Glass Fiber
4	Ends	ASTM A216 WCB
3	Stem	Stainless steel 316
2	Ball	ASTM A351 CF8M
1	Body	ASTM A216 WCB
Pos.	Description	Material

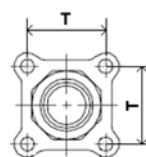
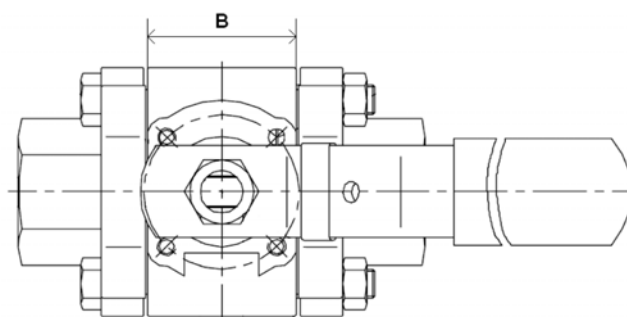
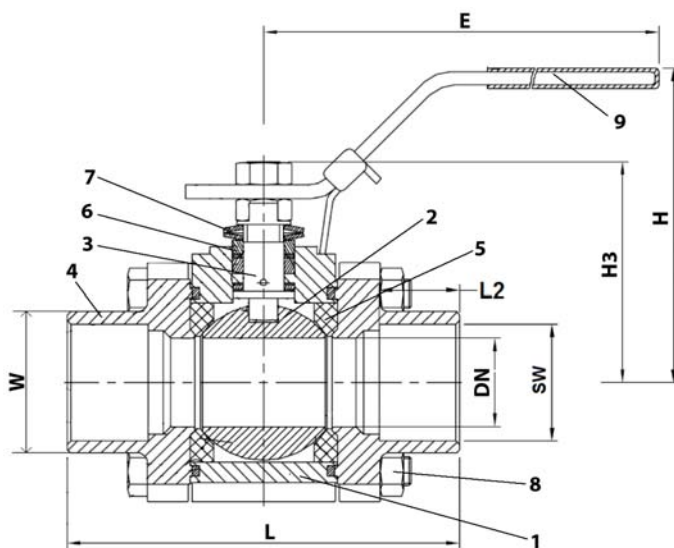
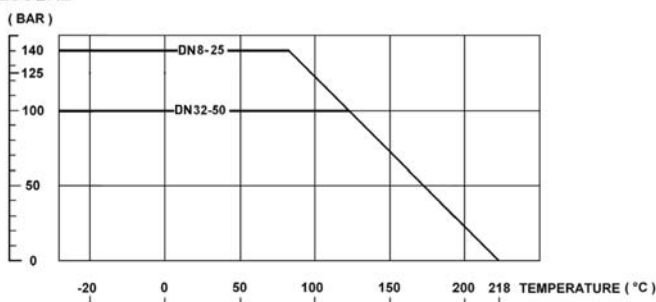
DIMENSIONS

DN		L	L2	B	E	H	H3	T	SW	W	Weight (kg)
mm	inch										
8	1/4"	64,8	10	19,6	134	64	37,2	32	14,3	29,5	0,71
10	3/8"	64,8	10	19,6	134	64	37,2	32	17,6	29,5	0,69
15	1/2"	72,5	10	24	134	72	45,1	39	21,9	30	0,83
20	3/4"	85,4	13	31	134	77	51,4	45	27,3	36	1,40
25	1"	105,3	13	40,7	170	83	61,2	50	33,9	44,5	2,00
32	1 1/4"	111	13	47,7	170	88	64,2	58	42,8	54	2,78
40	1 1/2"	127,3	13	55,6	207	104	79	68	48,9	60	4,08
50	2"	145	16	70	215	133	99,4	82	61,3	73,2	6,80

WORKING CONDITIONS

Steam : 12 bar maximum
 Maximum working temperature : -20°C / + 218°C
 Maximum working pressure : 100 to 140 bar following the DN

PRESSURE



STANDARDS

Design according to EN 12516-1 Class 600, ASME B16.34.
 Connection SW.

TECOFI France - 83, Rue Marcel Mérieux 69960 Corbas - FRANCE
 Tél. +33 (0) 4 72 79 05 79 - Fax +33 (0) 4 78 90 19 19 / +33 (0) 4 72 79 05 70
 Adresses e-mail : sales@tecofi.fr ; tecofi@tecofi.fr / Site web : www.tecofi.fr