

Ref. : BS 5261 pas

Rev. : B

Date : 06/12/2016

Page : 1/1

# FLANGED TYPE FULL BORE 2 PIECES BALL VALVE

## BS 5261



**Tecofi**   
VALVE DESIGNER - FRANCE

### APPLICATION

General use : Chemical industries, petrochemical industries, hydraulic installation, compressed air, heating and water distribution

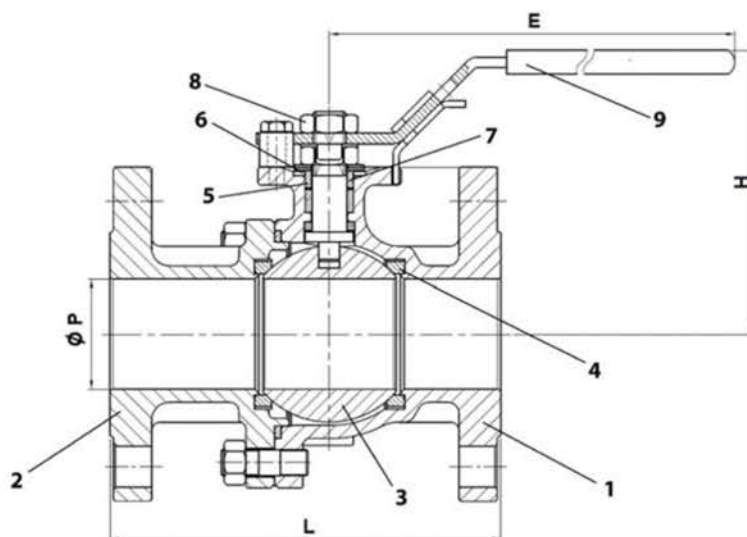
### GENERAL CHARACTERISTICS

From DN15 to DN200.  
Full bore.  
Anti blow-out stem.  
Double antistatic device.  
PTFE filled with glass seat.  
Locking device.  
ISO 5211 mounting pad.  
2 pieces type ( Split body ).  
Hollowed ball from DN125 to DN200.  
Primer coating for carbon steel valves.  
Fire safe according to API607 up to DN150  
Atex.



### CONSTRUCTION

9	1	Handle	SS 304	
8	1	Nut	SS 304	
7	1	Stem	SS	ASTM A276 316
6	1	Packing gland	SS 304	
5	1	Packing	Graphit	
4	1	Seat	PTFE filled with glass	
3	1	Ball	SS	ASTM A351 CF8M
2	1	End	Steel	ASTM A216 WCB
1	1	Body	Steel	ASTM A216 WCB
Pos.	Q-ty	Description	Material	



### DIMENSIONS

DN		L	E	ØP	H	Weight (kg)
mm	inch					
15	1/2"	115	158	15	75.6	2.3
20	3/4"	20	158	20	78.1	3
25	1"	125	196	24	92	4
32	1" 1/4	130	196	30	96	5.5
40	1" 1/2	140	245	38	109.1	7
50	2"	150	261	50	115.6	9.3
65	2" 1/2	170	400	64	188	14.4
80	3"	180	400	76	194	17.5
100	4"	190	400	98	215	23.3
125	5"	325	743	125	239.5	36.7
150	6"	350	743	150	256.5	52
200	8"	400	925	200	323.5	78

### WORKING CONDITIONS

Maximum pressure : 40 bar from DN15 to DN50  
16 bar up to DN200.

Maximum temperature : - 20°C / +200 °C

Pressure tests according to API 598, table 6.

### STANDARDS

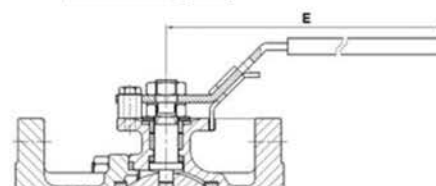
Fabrication according to ISO 9001 : 2008.

Construction according to EN 12516-1

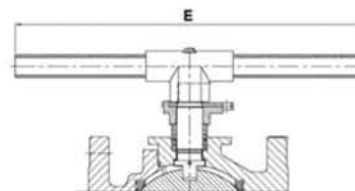
ISO PN16 R.F. flanges according to EN 1092-1 PN16

Face to face according to EN 558 series 27 ( DIN 3202 F4/F5 )

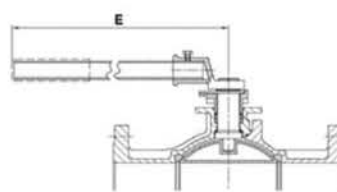
### Handle types



DN 15 - 50



DN 65 - 100



DN 125 - 200

**TECOFI France** - 83, Rue Marcel Mérieux 69960 Corbas - FRANCE  
Tél. +33 (0) 4 72 79 05 79 - Fax +33 (0) 4 78 90 19 19 / +33 (0) 4 72 79 05 70  
Adresses e-mail : sales@tecofi.fr ; tecofi@tecofi.fr / Site web : www.tecofi.fr