

Ref. : BR5240PN10.pas

Rev. : Initial

Date : 23/10/08

Page : 1/1

# WELDING NECK FLANGE TYPE 11 B

## BR5240PN10



### APPLICATION

General use: Mounting flanges for piping.

### GENERAL CHARACTERISTICS

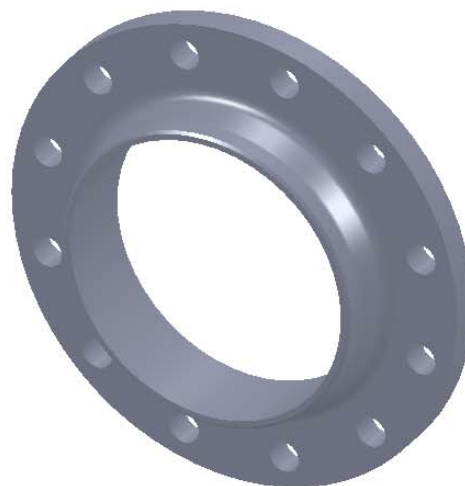
Range : from DN 200 up to DN 500.  
Type 11B flange.  
Rising face.  
PN10.

### CONSTRUCTION

1	1	Flange	Steel
Pos.	Qty.	Description	Material

### DIMENSIONS

DN		ØA <sub>1</sub>	S	Ø D	C <sub>2</sub>	H <sub>2</sub>	H <sub>3</sub>	N <sub>1</sub>	n x Ø L	Ø K	Ø d <sub>1</sub>	f <sub>1</sub>	Weight (kg)
mm	inch												
200	8"	219,1	6,3	340	24	62	16	234	8 x 22	295	268	3	11,3
250	10"	273,0	6,3	395	26	68	16	292	12 x 22	350	320	3	14,7
300	12"	323,9	7,1	445	26	68	16	342	12 x 22	400	370	4	17,4
350	14"	355,6	7,1	505	26	68	16	385	16 x 22	460	430	4	23,6
400	16"	406,4	7,1	565	26	72	16	440	16 x 26	515	482	4	28,6
450	18"	457,0	7,1	615	28	72	16	488	20 x 26	565	532	4	32,5
500	20"	508,0	7,1	670	28	75	16	542	20 x 26	620	585	4	38,1



### STANDARDS

Flange according to standard EN 1092-1

