

Ref. : BR5200PN16.pas

Rev. : Initial

Date : 22/10/08

Page : 1/1

FLAT FLANGE TYPE 01 A

BR5200PN16



Tecofi
VALVE DESIGNER - FRANCE

APPLICATION

General use: Mounting flanges for piping.

GENERAL CHARACTERISTICS

Range : from DN 15 up to DN 500.

Type 01 A flange.

Flat sealing face.

PN16.

CONSTRUCTION

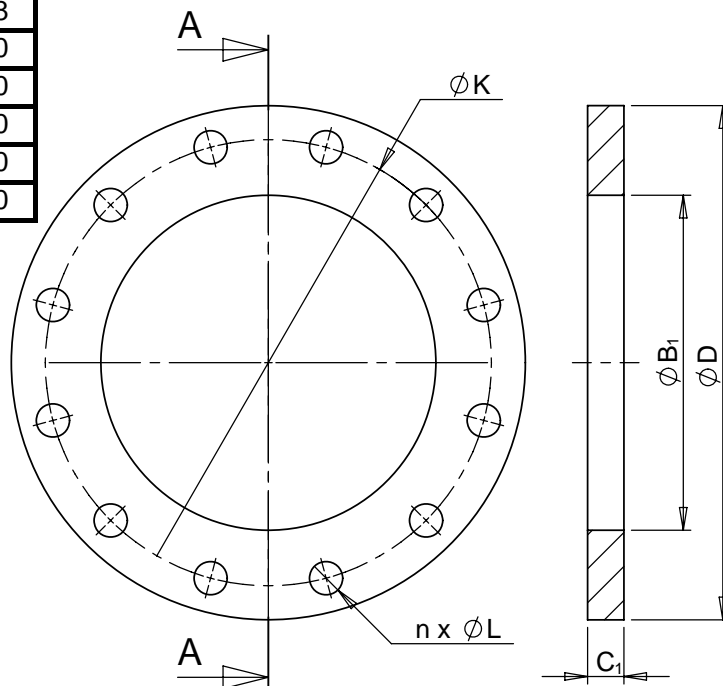
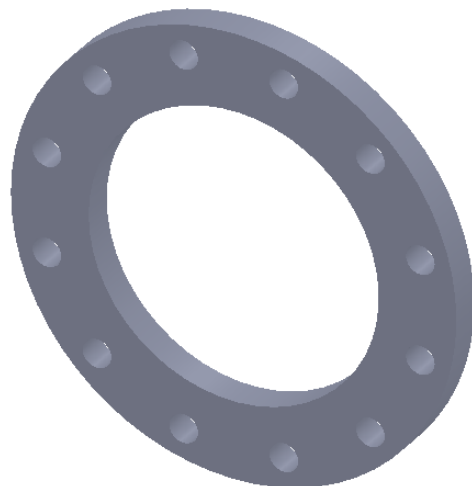
1	1	Flange	Steel
Pos.	Qty.	Description	Material

DIMENSIONS

DN		B ₁	C ₁	Ø D	Ø K	n x Ø L	Weight (kg)
mm	inch						
15	1/2"	22,0	14	95	65	4 x 14	0,7
20	3/4"	27,5	16	105	75	4 x 14	0,9
25	1"	34,5	16	115	85	4 x 14	1,1
32	1"1/4"	43,5	16	140	100	4 x 18	1,6
40	1"1/2"	49,0	16	150	110	4 x 18	1,9
50	2"	61,5	19	165	125	4 x 18	2,5
65	2"1/2"	77,5	20	185	145	8 x 18	3,0
80	3"	90,5	20	200	160	8 x 18	3,8
100	4"	116,0	22	220	180	8 x 18	4,4
125	5"	141,5	22	250	210	8 x 18	6,0
150	6"	170,5	24	285	240	8 x 22	7,2
200	8"	221,5	26	340	295	12 x 22	9,7
250	10"	276,5	29	405	355	12 x 26	15,8
300	12"	327,5	32	460	410	12 x 26	19,0
350	14"	359,0	35	520	470	16 x 26	29,0
400	16"	411,0	38	580	525	16 x 30	36,0
450	18"	462,0	42	640	585	20 x 30	46,0
500	20"	513,5	46	715	650	20 x 33	62,0

STANDARDS

Flange according to standard EN 1092-1



TECOFI France - 83, Rue Marcel Mérieux 69960 Corbas - FRANCE
Tél. +33 (0) 4 72 79 05 79 - Fax +33 (0) 4 78 90 19 19 / +33 (0) 4 72 79 05 70
Adresses e-mail : sales@tecofi.fr ; tecofi@tecofi.fr / Site web : www.tecofi.fr