

QUICK FLANGE ADAPTOR

TECHNICAL PASSPORT

QUICK FLANGE ADAPTOR FOR PE/PVC PIPES

ADTPEPVC

APPLICATION

The quick flange adaptors are used as a junction products between flanges and PE or PVC pipes.



Fluids: drinking water, clear water, compatible liquids.

GENERAL CHARACTERISTICS

Range: from DN40 to DN400.
Design according to EN545/ISO2531.
Connection PN10/PN16.

CONSTRUCTION

Pos.	Description	Material	Standard
1	Body	Ductile iron GGG50	EN1563
2	Grip ring	Brass CuZn36P03	CuZn36P03
3	Rubber	EPDM	EN 682-1

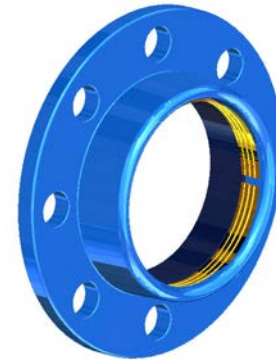
DIMENSIONS

DN		L	D	D0	Weight (kg)
mm	inch				
DN40-50	1"1/2 - 2"	50	165	50	1.7
DN50	2"	55	165	63	1.8
DN60-65	2"1/4 - 2"1/2	55	185	63	2.4
DN60-65	2"1/4 - 2"1/2	58	185	75	2.2
DN80	3"	60	200	90	2.8
DN100	4"	68	220	110	4
DN125	5"	70	250	125	4.2
DN125	5"	75	250	140	4.1
DN150	6"	80	285	160	6.5
DN200	8"	90	340	200	8.5
DN200	8"	93	340	225	8
DN250	10"	95	400	250	12.5
DN300	12"	100	455	315	15
DN400	16"	120	580	400	25

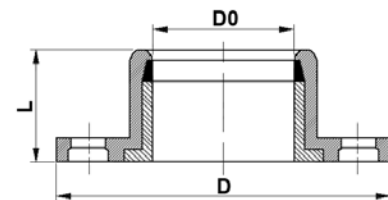
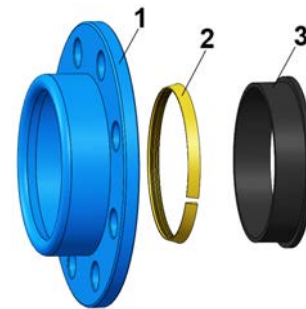
STANDARDS

Connection	ISO PN10/16 according to EN1092-2, ISO 7005/2, BS4504.
------------	--

HOMOLOGATION PRODUIT



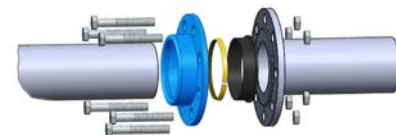
Epoxy coated body RAL 5015, 250 µm thickness



WORKING CONDITIONS

Maximum working pressure: 16 bar

ASSEMBLING



Tecofi France

83 rue Marcel Mérieux - 69960 Corbas
Tél. +33 (0)4 72 79 05 79 - Fax. +33 (0)4 78 90 19 19
E-mail : sales@tecofi.fr - www.tecofi.fr

